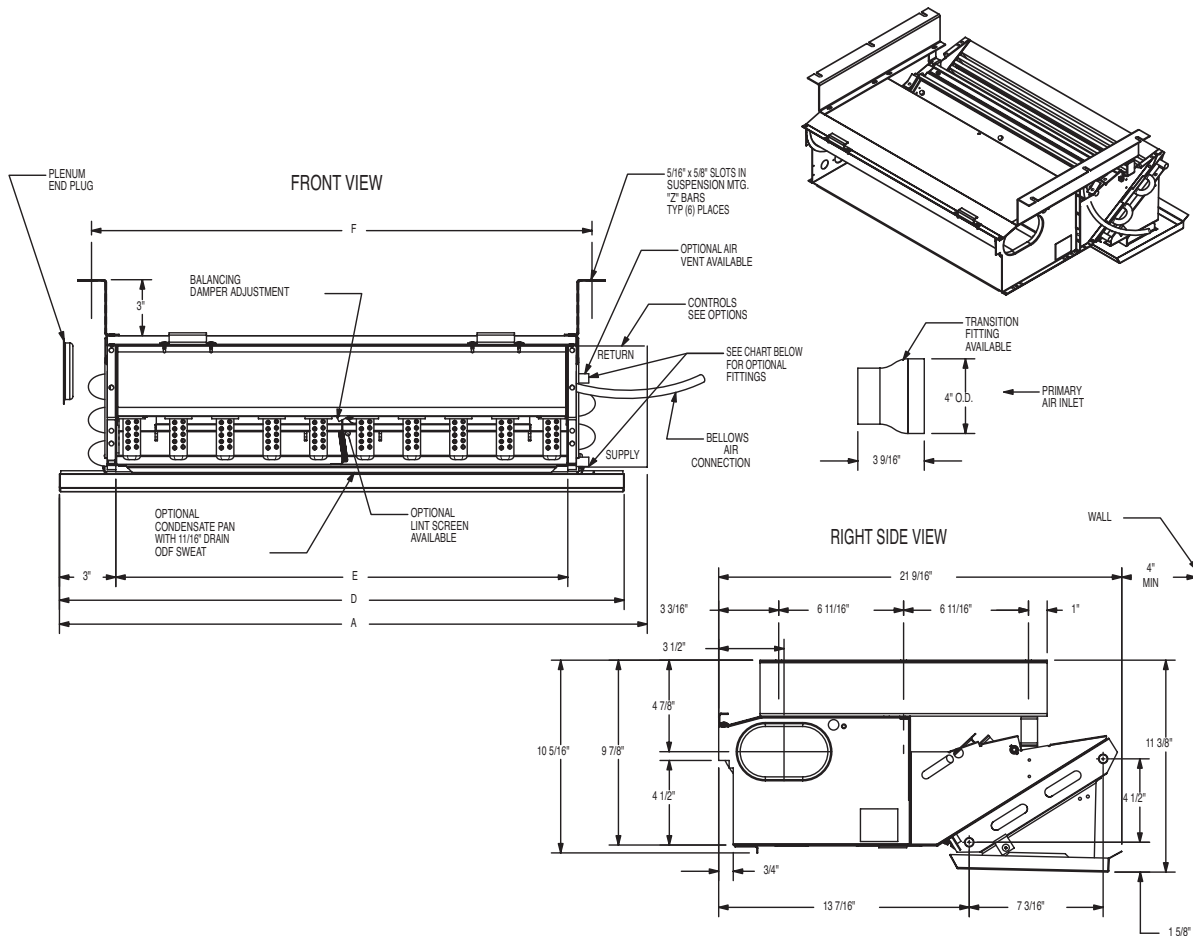


### MODEL HCB



UNIT SIZE (HCB)	24"	32"	40"	52"
DIMENSIONS (IN.) BASE UNIT (A)	31"	39"	47"	59"
DRAIN PAN (D)	30-1/4"	38-1/4"	46-1/4"	58-1/4"
NOM. COIL (E)	24-1/8"	32"	40"	52"
Z BAR (F)	27-1/8"	35"	43"	55"
<b>MIN FREE AREAS (SQ. IN.) DISCHARGE GRILLE</b>	81	108	135	175
RECIRCULATION GRILLE	234	288	343	439
<b>APPROX. SHIPPING WT. (LB)</b>	38	47	54	66

OPTIONAL FITTINGS	
CODE DIGIT #9	DESCRIPTION
0	1/2" ODF SWEAT FITTING
1	1/2" ODF SWEAT FITTING W/VENT
2	1/2" ODM FLARE FITTING
3	1/2" ODM FLARE FITTING W/VENT

#### NOTES:

1. THERMOSTAT MOUNTED ON RIGHT SIDE ONLY OR ON THE WALL
2. SLAVE UNITS DIMENSIONALLY THE SAME, EXCEPT WITHOUT CONTROLS
3. NONCHANGEOVER UNITS LESS CHANGEOVER VALVE
4. FOUR INCH MINIMUM DISTANCE FROM WALL REQUIRED TO OBTAIN RATED CAPACITY; 8-1/2" MINIMUM FOR SCREEN REMOVAL
5. SHIPPING WEIGHT INCLUDES PACKAGING

#### DESCRIPTION:

THE HCB IS SHIPPED FROM THE FACTORY WITH THE FOLLOWING:

- ACOUSTICALLY DESIGNED PLENUM AND NOZZLES AS SPECIFIED
- ONE 6-TUBE COIL WITH COPPER TUBES AND ALUMINUM FINS
- CONDENSATE PAN AS SPECIFIED
- TWO Z BRACKETS FOR MOUNTING UNIT TO A RIGID FLAT HORIZONTAL SURFACE
- COIL CONNECTIONS AS SPECIFIED
- HARDWARE KIT INCLUDES:
  - (8) MOUNTING SCREWS
  - (8) TINNEMAN NUTS
  - (1) LINT SCREEN CLIP