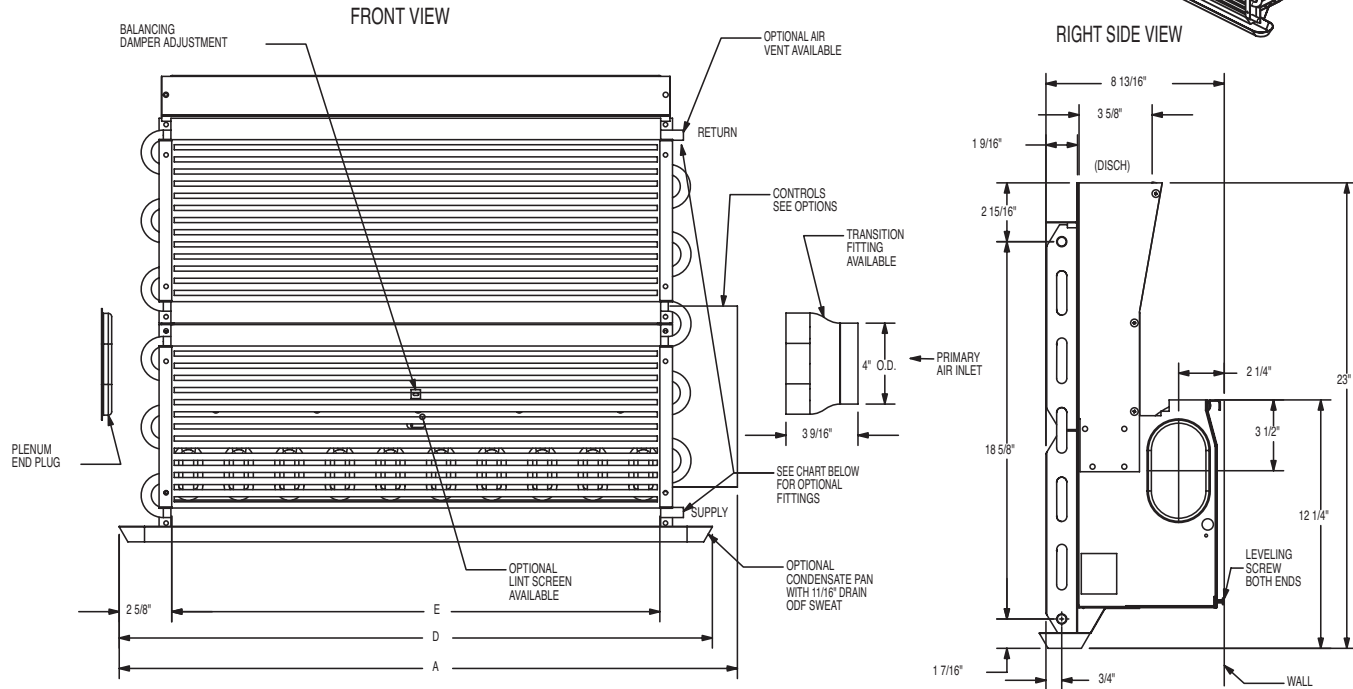
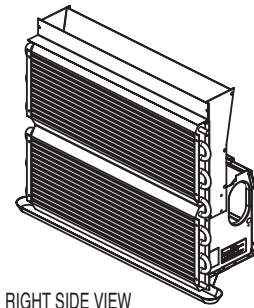


MODEL V2H



UNIT SIZE (V2H)	24"	32"	40"	52"
DIMENSIONS (IN.)				
BASE UNIT (A)	30-5/8"	38-1/2"	46-1/2"	58-1/2"
DRAIN PAN (D)	29-1/2"	37-1/2"	45-1/2"	57-1/2"
NOM. COIL (E)	24-1/8"	32"	40"	52"
MIN. HEIGHT FROM FLOOR	3 INCHES			
MIN FREE AREAS (SQ. IN.)				
DISCHARGE GRILLE	81	108	135	175
RECIRCULATION GRILLE	473	630	788	1023
APPROX. SHIPPING WT. (LB)	35	43	52	66

OPTIONAL FITTINGS	
CODE DIGIT #9	DESCRIPTION
0	1/2" ODF SWEAT FITTING
1	1/2" ODF SWEAT FITTING W/VENT
2	1/2" ODM FLARE FITTING
3	1/2" ODM FLARE FITTING W/VENT

DESCRIPTION:

THE V2H IS SHIPPED FROM THE FACTORY WITH THE FOLLOWING:

- ACOUSTICALLY DESIGNED PLENUM AND NOZZLES AS SPECIFIED
- ONE 12-TUBE COIL WITH COPPER TUBES AND ALUMINUM FINS
- CONDENSATE PAN AS SPECIFIED
- COIL CONNECTIONS AS SPECIFIED
- RECOVERY STACK AND DRAIN PAN, ASSEMBLED AND READY FOR WALL MOUNTING
- HARDWARE KIT INCLUDES:
 - (2) LEVELING SCREWS
 - (2) LEVELING SCREW CLIPS
 - (4) LINT SCREEN CLIPS
 - (2) COIL CONDENSATE PLATES WITH CLIPS

NOTES:

1. THERMOSTAT MOUNTED ON RIGHT SIDE ONLY OR ON THE WALL
2. SLAVE UNITS DIMENSIONALLY THE SAME, EXCEPT WITHOUT CONTROLS
3. CONDENSATE CONNECTION MOUNTED SAME SIDE AS COIL CONNECTION
4. SHIPPING WEIGHT INCLUDES PACKAGING